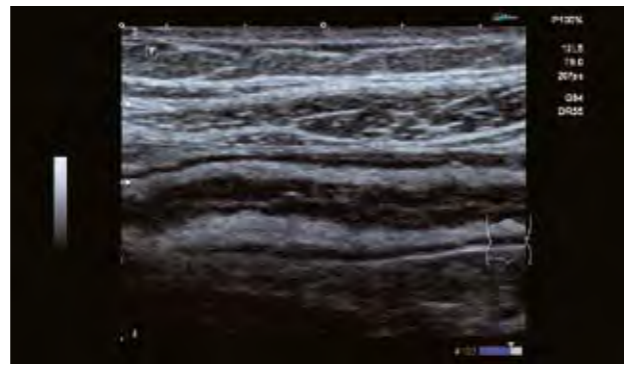


Fig.17



Ascending colon tumor.

Fig.18



Ileitis terminalis (M. Crohn).

Fig.19



Acute appendicitis.

Fig.20



Acute appendicitis.

Fig. 21



Pancreas carcinoma.

Fig.22



Biopsy of a liver lesion.



Conclusion:

A mobile ultrasound system that provides a wide range of functionalities, high flexibility and exceptional image quality is an essential asset in everyday clinical practice and should be a routine tool in any modern hospital. Toshiba's Viamo portable ultrasound system is uncomplicated, fast, versatile and offers the renowned Toshiba image quality. In a high-pressure clinical setting this all-round system is a very practical solution.

Viamo expands imaging capabilities in gastroenterology

Modern healthcare, and ultrasonography in particular, require perfect time management and utmost flexibility in order for the physician to be able to provide excellent patient care. A mobile ultrasound system that meets the highest quality standards can contribute substantially to fulfilling these requirements in daily clinical practice. A mobile ultrasound system is ideally suited for bedside examinations in any acute care setting but also for the ICU, the emergency room, the OR and in the physician's office.

Since portable ultrasound systems are typically used by range of disciplines including sonographers, radiologists and specialist physicians, they should be easy to and intuitive operate. The touch screen concept of Toshiba's Viamo is an ideal solution. Even less experienced physicians can easily operate the neatly arranged functions, with particularly easy access to those that are most frequently used in routine diagnostics, such as gain, focus position and penetration. Moreover, most measuring parameters, the most frequently used Doppler functions and the patient browser can be accessed via the touch screen, which is freely programmable to suit each user's individual requirements and preferences. In addition, Quick Scan allows push-button image optimisation. When fitted with a sterile cover the touch screen can also be used in intraoperative settings.

Mounted on an easily manoeuvrable and slim pole cart, the Viamo is highly mobile so that we never used it in laptop mode. From stand-by the system is up and running in less just a few seconds. As it also offers battery-powered operation it does not continuously require an electric outlet.

The images below were acquired during daily usage in our gastroenterological department in emergency situations, routine and in bedside exams.



Acute cholecystitis and cholelithiasis.



Acute cholecystitis with sludge and calculus.



Prepapillary bile duct stone.



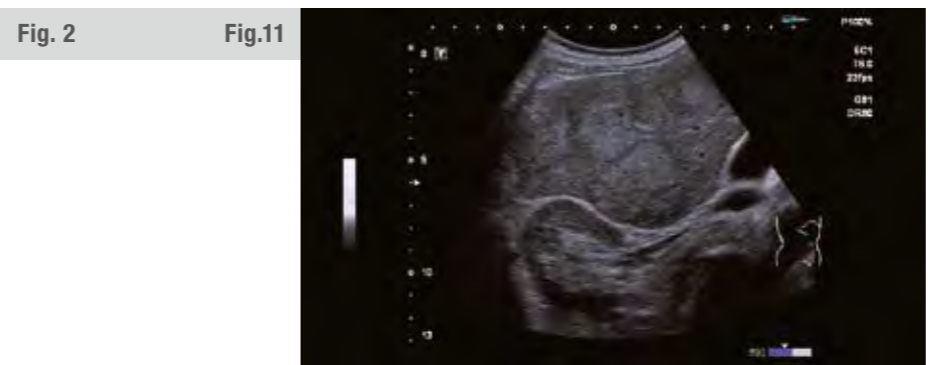
Intrahepatic cholestasis ("double lumina").



Pleural effusion right (penetration 18 cm).



Lymphoma infiltration of the spleen.



Liver metastases, right lobe.



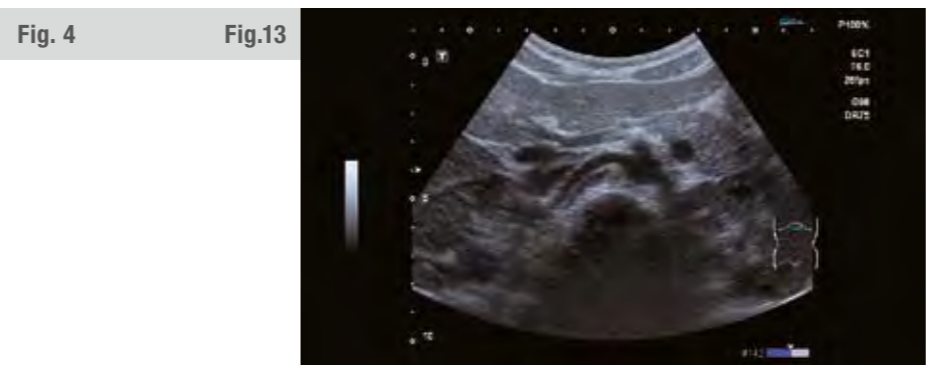
Bile duct stent.



Ascites with large-nodule cirrhosis of the liver.



Candida abscess of the lower abdomen.



Normal right renal artery, b-mode.



Duplex of renal artery.



Solitary gall bladder calculus.



Multiple gall bladder calculus.



Bladder wall tumor.



Parapelvic renal cyst.

Fig. 8

Fig.10

Fig.12

Fig.14

Fig.16